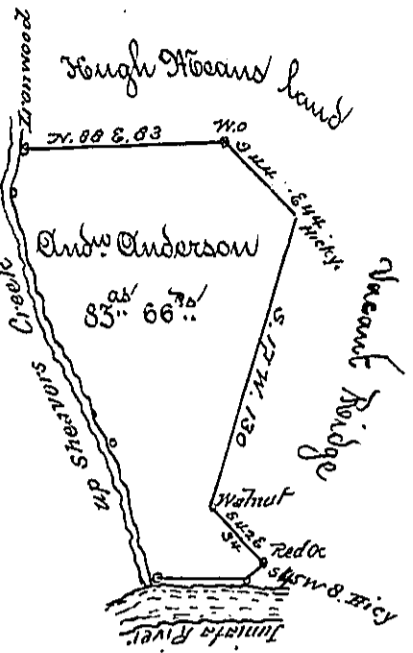


The Courses & Distances up the
Riser of Sheavers Creek from
the Hickory to the Draxwood

West -	49	
N 16 W ...	66	
N 30 W ..	45	
N 19 W ..	66	
N 14 E ..	20	Draxwood
	<u>246</u>	



Situate on the East Side of Sheavers Creek Opposite Daniel Andersons Tract in
in the Township of County of Huntingdon Containing 83^{2/3}' 66^{7/8}' and the usual allow-
ance surveyed the 29th Day of September 1782 in pursuance of an Order No 4919 dated
the 9th Day of April 1768

To John Lukens Esquire D. G.

John Canan D. S.

IN TESTIMONY that the above is a copy of the original remaining on file in
the Department of Internal Affairs of Pennsylvania, made
conformably to an Act of Assembly approved the 16th day of
February, 1833, I have hereunto set my Hand and caused
the Seal of said Department to be affixed at Harrisburg,
this first day of April 1902.

James W. Fatta
Secretary of Internal Affairs.